



Join us as we gather to renew, repair, and restore our relationship to God's creation.

CONFERENCE GOALS

**Equipping for Climate
Action**

**Empowering
Congregations**

**Carbon Neutrality by 2030
(TEC Goal)**

REGISTRATION & LOGISTICS

REGISTRATION FEES (INCLUDES MEALS)

Package	Dates	Cost
Full Conference – Early Bird	Sept 25–27 (before July 15)	\$200
Full Conference – Regular	Sept 25–27 (after July 15)	\$250
Saturday Only	Sept 26	\$200

LODGING

The Alta Club Hotel

100 East South Temple, Salt Lake City, UT 84111 (Third Floor) — Closest hotel to the Conference Center

Single or double room with private bath: \$180/night

[View available rooms](#) — click the link and select HOTEL

To reserve: Call 801-322-1081 (ask for Josh) or email frontdesk@altaclub.org (subject: “Dear Josh”). Rooms held for the Episcopal Church; sponsor: “Bob Springmeyer.” Pay with personal credit card.

Many downtown hotels are also available at typical rates of \$200–\$250/night.

AIRPORT TRANSPORTATION

Green Line Train from Salt Lake City International Airport

- Direct service from the airport terminal — One-way ticket: \$2.50
- City Center Station (25 min) — one block walk to Episcopal Retreat Center and Alta Club Hotel
- Court House Station (27 min) — half block walk to Little America Hotel

CONFERENCE SCHEDULE

FRIDAY | September 25, 2026

FRIDAY AFTERNOON

1:00 pm Informal Gathering & Registration

- Registration opens — browse exhibits and meet other attendees
- Share stories and connect with fellow creation care advocates

Dialogue Session & Nature-Attuned Practice

Ron Barness & The Rev. Payton Hoegh



The Rev. Payton Hoegh

- Group dialogue on Creation Care ministry — the shift from climate awareness to climate faithfulness
- Optional: Guided Spirituality in Nature practices (begins 3:00 pm)

FRIDAY EVENING — OPENING OF THE CONFERENCE

5:00 pm Welcome & Dinner

- Welcome (5:00 pm)
- Dinner with table discussions by areas of interest (5:30 pm)

6:30 pm Spiritual Foundation of Creation Care

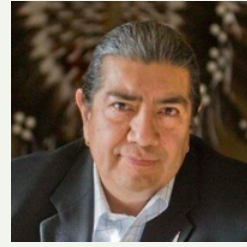
The Rev. Payton Hoegh • The Rev. Jazzy Bostock • Forrest Cuch



The Rev. Jazzy Bostock



The Rev. Payton Hoegh



Forrest Cuch

Connection, Kinship, Companionship

- Indigenous wisdom and relationships of harmony with creation
- Moving from disconnection to connection
- The Christian call to care for Earth

8:00 pm Adjourn

SATURDAY | September 26, 2026

SATURDAY MORNING

8:00 am Breakfast & Exhibits



Rev. Lisa J.
Graumlich, PhD

KEYNOTE

From Information to Transformation

8:45 am

- The stubborn gap between knowing and acting
- Eco-conversion as the missing piece
- When solar panels become a spiritual act

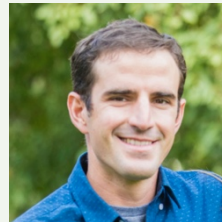
10:00 am Water Panel — Conservation



Ben Abbott
Grow the Flow



Amy Quirk
Bay Keepers



Eric Balken
*Executive Director, Glen
Canyon Institute*



Zanna Stutz
*Program Director, Glen
Canyon Institute*

Goal: Water Policies with Positive Social Impact

Different stories of water crises and their impact

- Saving Great Salt Lake from draught and overuse; and the environmental disaster if we do nothing
- Facing possible extinction of the Colorado River - watershed for 40 million people in the West
- Defending the San Francisco Bay - home to 8 million people - using science, policy, and law.

11:30 am Lunch & Exhibits

SATURDAY AFTERNOON

12:30 pm Air Panel — Decarbonization



Daniel Moyer



Bob Wohlsen



Bill Shreve

Goal: Carbon Neutrality by 2030

- Diocesan-wide improvement of energy efficiency and reduction of fossil fuel use in the Episcopal Diocese of Northern California
- Comprehensive sustainability initiative at Saint Alban's Church in Arcata, CA
- Working with nature to sequester carbon in the soil, reduce water consumption, and model the use of native plants at St. Timothy's Church in Mountain View, CA

2:00 pm Fire Panel — Resilience in a Fire-Prone World



Dr. Lucy Jones

Disaster Recovery & Resilience



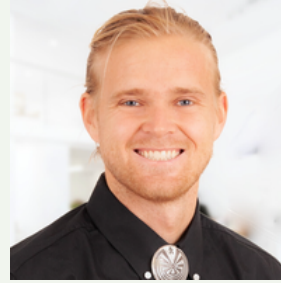
Grace Wakelee-Lynch

- Lessons from the LA Fires
- Diocesan resilience planning and preparation
- Applying science in the creation of more resilient communities

4:00 pm Land Panel — Regenerative Agriculture



Dr. Brien (Ben) Norton



McKinley Smoot

Understanding Land Degradation, Erosion, and Loss of Biodiversity

- Born into a Australian ranching family, Ben worked as rangeland scientist in 15 countries also taught sustainable practices at Utah State University
- Transitioning from unsustainable farming and grazing practices which lead to desertification; improving economies for future generations.

SATURDAY EVENING

5:30 pm Social Hour & Dinner

- Sharing stories and gathering around areas of interest
- Dinner with table discussions

SUNDAY | September 27, 2026

SUNDAY MORNING

8:00 am Continental Breakfast & Box Lunch Pick-Up

8:30 am Province VIII Creation Care Network — Next Steps



Miriam Casey



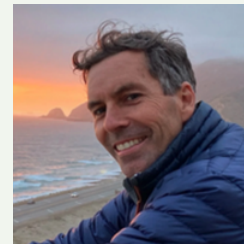
Bill Shreve

- Introducing the Province VIII Creation Care Network
- Province VIII Eco-Regions
- Continuing ACTION through workshops and webinars

9:00 am Celebrating Lands, Water, & Wildlife on Public Lands



Deena Ute



Gavin Noyes

1.35 million-Acre Bears Ears National Monument

- Elevating indigenous voices to maintaining cultural practices in the management of Bears Ears National Monument
- Native American history, healing trauma, and conservation with art

9:45 am Indigenous Closing Ceremony



Forrest Cuch

10:15 am Adjourn



The Rev. Holly Huff

Join St. Mark's Cathedral in Worship

Season of Creation Eucharist — 10:30 am

St. Mark's Cathedral, Salt Lake City

CONFERENCE SPONSORS

**Province VIII
Diocese of Utah
St. Mark's Cathedral, Salt Lake City
Diocese of California
Diocese of Hawaii
Diocese of Northern California
Diocese of San Joaquin**

DEDICATION



To Emily Hopkins (1954 – 2026)

Founder of the Province VIII Creation Care Network

This conference is dedicated to the memory and enduring legacy of Emily Hopkins.

Emily held an enduring love for God’s creation, particularly the vastness of the oceans and the serenity of the redwood forests. She translated this devotion into action through her deep engagement with The Episcopal Church’s Creation Care Ministry at both the national and regional levels. A tireless advocate, she championed and secured resolutions at several General Conventions, and was instrumental in launching the Green Caucus and the Province VIII Creation Care Network.

Her passion, profound wisdom, and courage served as an inspiration to all who had the privilege of knowing and partnering with her. We are committed to honoring her legacy by continuing the vital work of caring for creation, building upon the foundation she established.

Donations in Emily’s Memory

William Potts / CFO, Episcopal Diocese of Utah

ATTN: Creation Care Conference 2026

75 South 200 East, Salt Lake City, UT 84111

Checks payable to: The Episcopal Diocese of Utah

Memo line: Province VIII Conference